

TRACK AND MANAGE YOUR VEHICLES

onBoard™ Tracker enables organizations to monitor the position, direction and speed of their fleet in real-time. Dispatchers can zoom in on aerial, bird's eye or road views, and provide detailed information about access routes, incident scenes and structures. Combined with historical reporting and geo-fence capabilities, this can help organizations achieve consistently shorter response times and optimize use of vehicles.

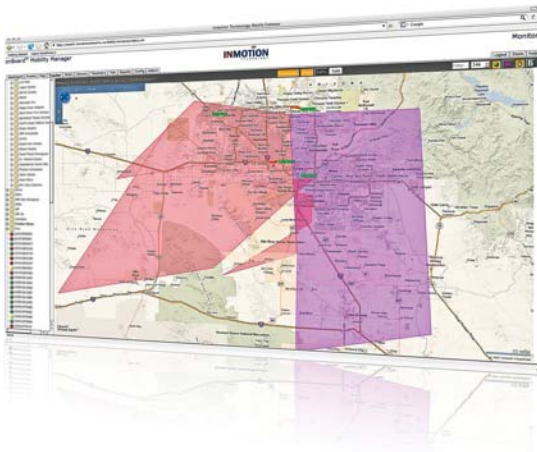
LOCATION TRACKING FOR VEHICLES

Advanced vehicle tracking tools enable fleet managers to analyze current and historical data to determine not only the current location, direction and speed of vehicles, but also to view location over time.



onBoard Tracker utilizes the built-in GPS in the onBoard Mobile Gateway. GPS data is sent to the onBoard Mobility Manager server at varying rates depending on velocity (less when stationary, more when moving) to provide a detailed record of vehicle location. Fully integrated within the onBoard Mobility Manager user interface, onBoard Tracker provides live map views of your entire fleet with the ability to drill down to street level for more detail. Detailed historical reports provide the real power of the system, combining color coded map trails with lists of data providing the location, time and even speed of every journey.

ZONE MONITORING FOR VEHICLE DESIGNATED AREAS



Operational boundaries can be mapped to track vehicle crossings. Once these areas are defined, dispatchers can choose to view reports or be notified as vehicles enter and exit various zones, also known as polygonal geo-fences, are multi-sided virtual boundaries. With the "Zones" option in onBoard Tracker, dispatchers can define simple or complex geographical regions on a map and assign vehicles to specific zones. For example, operations can create a zone that is a specific distance around the depot so an alert is raised when a returning vehicle crosses into the zone. Zones can be created with great detail (as much as the map will allow), and existing zones can be used to help ensure new zones share exact boundaries.



KEY FEATURES

Tracks location of vehicles in real-time

Designate zones for vehicles in the fleet

Monitor fleet in real-time from any location

Customize views



MONITOR FLEETS IN REAL-TIME

onBoard Tracker provides the freedom to manage the fleet without being chained to a management console. As organizations are asked to optimize efficiency, management by exception, i.e. "I only want to know when there is problem", is becoming ever more critical. The onBoard Mobility Manager combined with onBoard Tracker helps realize this business necessity. For example, the system can automatically send alerts via email for zone crossings. Create alert lists for single or multiple recipients, selecting single vehicles or whole vehicle groups.

POWERFUL HISTORICAL DATA

onBoard Tracker includes a suite of reports that enables users to optimize regular activity and address unwanted activity. Reports combine map views with data lists that can be exported to Excel for further analysis. Vehicle stop reports provide street addresses where available by matching GPS location. Speed thresholds enable monitoring of over-speed instances, including approximate location and time spent above the speed threshold. Zone reports provide an efficient way to monitor vehicle activity in large or small areas. Microsoft® Live Maps, Google™, and ESRI maps are supported.



onBoard TRACKER TECHNICAL SPECIFICATIONS

- onBoard Tracker is available for onBoard Mobility Manager (appliance or hosted service) installations
- onBoard Mobility Manager (Appliance): onBoard Tracker is available as a separate software module
- onBoard Mobility Manager (Hosted Service): onBoard Tracker is available as a hosted application

onBoard Tracker is an application available with In Motion Technology's onBoard Mobility Manager. The onBoard Mobility Manager continuously collects and analyzes information from onBoard Mobile Gateways deployed in vehicles, allowing an organization to manage its mobile network, fleet, on-board devices and operations to peak efficiency.

© 2011 In Motion Technology Inc. U.S. Patent #7,382,771. Specifications subject to change without notice. onBoard is a trademark of In Motion Technology Inc. All other names mentioned herein are trademarks or registered trademarks of their respective owners.