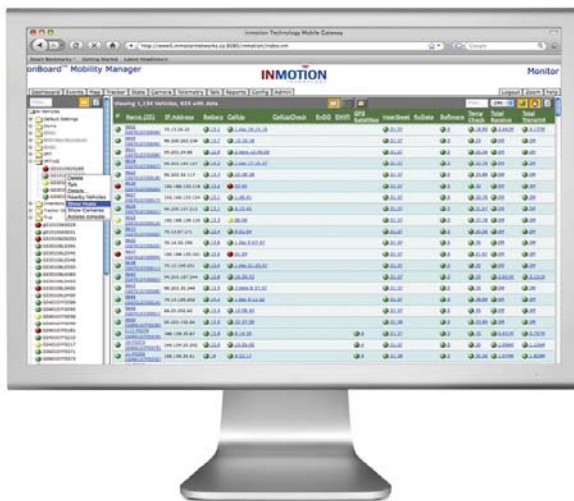


SUPPORT MOBILE DEVICES REMOTELY

The mobile work environment is being inundated with wireless equipment, and while all this equipment increases productivity and reduces costs, it creates new complexities for IT support teams. After all, this network is "moving". When users run into difficulty with laptops, tablets and other equipment, they're forced to return to the depot for maintenance. That might work if you're working close to a center that can provide support, but what if the depot is 40 or even 400 miles away, and you don't have plans to return there for days?



KEY FEATURES

Avoid taking vehicles off the road for routine IT problems

Provide real-time IT support from any location

Support a wide range of end user equipment remotely

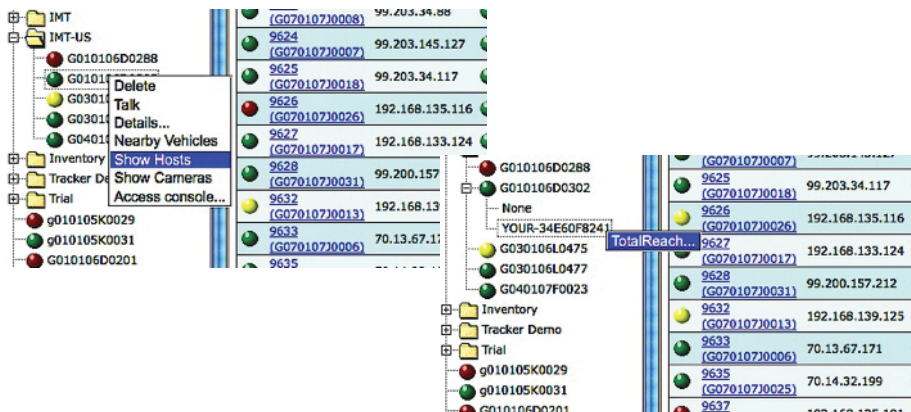
Improve productivity

TROUBLESHOOT IT PROBLEMS AND KEEP VEHICLES ON THE ROAD

onBoard™ Total Reach enables IT teams to remotely and securely "reach through" and administer communications devices connected to onBoard Mobile Gateways from any remote location.

PROVIDE REAL-TIME IT SUPPORT FROM ANY LOCATION

onBoard Total Reach uses Virtual Network Computing (VNC) technology, and provides a unified view for IT administrators to quickly isolate the Gateway on the vehicle, see the devices that are connected, and establish an encrypted tunnel through a firewall to the problem device and activate a remote session. Eliminate complex address management issues and allow IT to focus on helping mobile crews get on with the job.



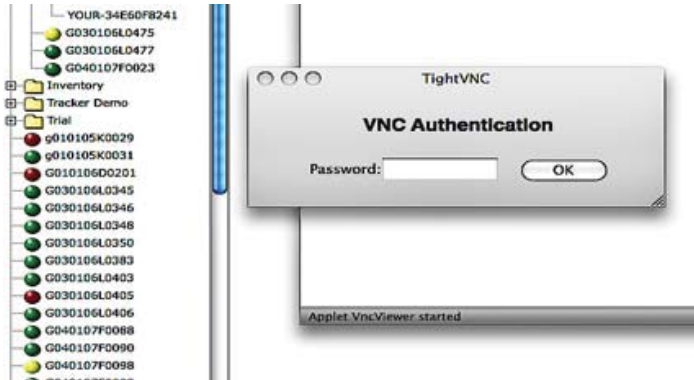
onBoard™ Total Reach

SUPPORT MOBILE DEVICES REMOTELY



SUPPORTS A WIDE RANGE OF END-USER EQUIPMENT

By leveraging open-source VNC software, onBoard Total Reach allows IT administrators to support a variety of devices – laptops, tablets, medical equipment, and any Windows® Mobile or Palm® device. You can see exactly what your field crews see, and you'll be able to troubleshoot the problem, apply updates, and even show the crew what to do.



IT SUPPORT REMOTELY

onBoard TOTAL REACH TECHNICAL SPECIFICATIONS

- onBoard Mobility Manager (Appliance): onBoard Total Reach is available as a separate software module
- onBoard Mobility Manager (Hosted Service): onBoard Total Reach is available as a hosted application

onBoard Total Reach is an application available with In Motion Technology's onBoard Mobility Manager. The onBoard Mobility Manager continuously collects and analyzes information from onBoard Mobile Gateways deployed in vehicles, allowing an organization to manage its mobile network, fleet, on-board devices and operations to peak efficiency.

© 2011 In Motion Technology Inc. U.S. Patent #7,382,771. Specifications subject to change without notice. onBoard is a trademark of In Motion Technology Inc. All other names mentioned herein are trademarks or registered trademarks of their respective owners.