

**NAVIGATION AND COMMUNICATIONS
FOR THE MOBILE WORKFORCE**

onBoard™ Nav enables organizations to communicate with their fleets and provide voice-guided navigation to crews without purchasing expensive laptops, tablets or MDTs. Using compatible Garmin personal navigation devices (PND) connected to the onBoard Mobile Gateway, dispatchers can communicate more effectively with crews, providing destination addresses for voice-guided turn-by-turn navigation and two-way messaging. For smaller groups, when combined with onBoard Tracker for automatic vehicle location (AVL), the solution provides a cost-effective dispatch application. For larger organizations, onBoard Nav can complement a large scale CAD deployment by providing a cost-effective screen in the vehicle.



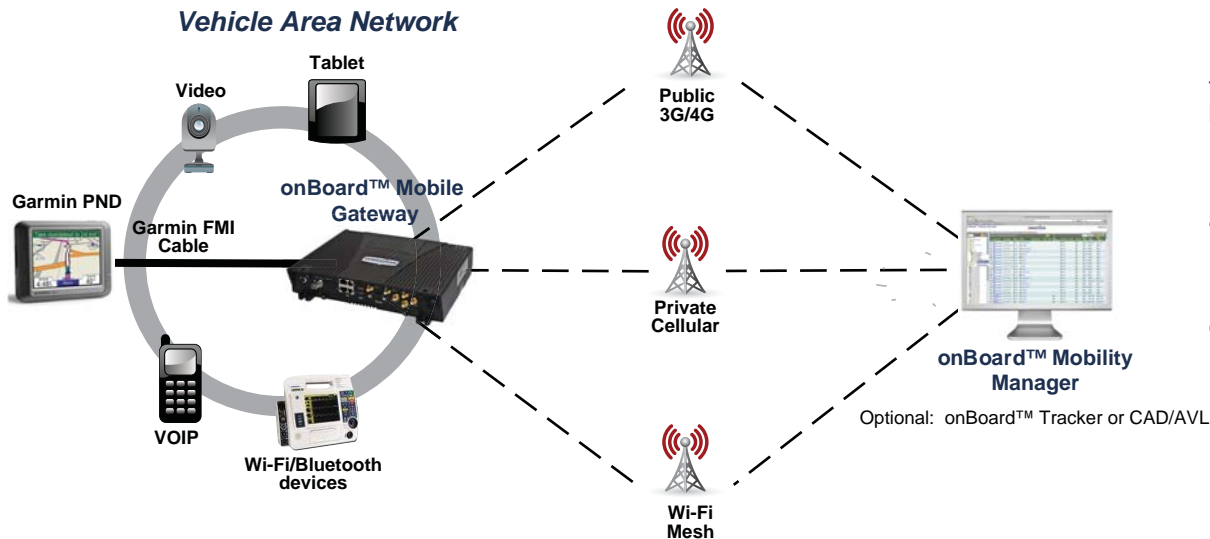
KEY FEATURES

Provides a cost-effective in-vehicle display

Enables voice-guided turn-by-turn navigation to be pushed to the fleet

Increases fleet productivity and efficiency

Increases customer and employee satisfaction



ORGANIZATIONAL BENEFITS

Improves driver safety: Voice-guided navigation enables employees to focus on driving and prevents last-second direction changes; one-press responses to multiple choice questions minimizes driver distraction; broadcast text messaging ensures safety information is not missed when drivers are outside the vehicle.

Increases productivity and efficiency: Address of next job is waiting on-screen for the driver, eliminating the need to initiate a request and subsequent discussion with dispatcher; voice-guided navigation reduces the time that a driver otherwise needs to learn the most efficient route.

Improves customer satisfaction: Knowing driver status prevents dispatchers from attempting to dispatch a crew that is unavailable which reduces delays in responding to customers; dispatchers know if a crew has arrive or departed.

Increases employee satisfaction: Reduced misunderstandings between dispatchers and crews creates a healthier working environment for those on the front line.

Reduces capital costs of providing vehicle communications infrastructure: Cost-effective PNDs can easily replace or supplement laptops or tablets, freeing up processing power to focus on more complex tasks.

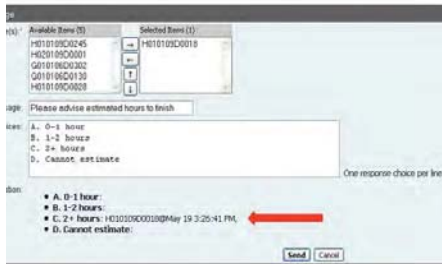


COMMUNICATION WITH DRIVERS

Broadcast Messages	Multiple Choice Questions	Pending/Completed Calls
A single message can be entered by dispatch and broadcast to single vehicles or groups.	Dispatch can provide multiple choice responses (including yes/no) to reduce the time it takes crews to respond.	Addresses are listed and then checked off as the driver acknowledges arrival.

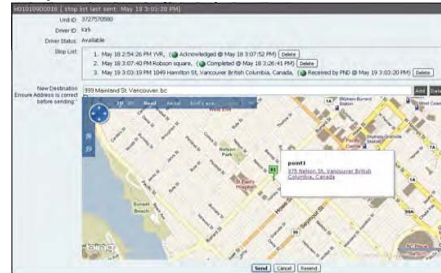
BROADCAST MESSAGE MONITORING

View the vehicle details, with time/date stamp, of replies to a broadcast message



ENTERING AND CONFIRMING ADDRESSES BEFORE SENDING

Enter a full or partial address, or just click on the map to choose the address to send to the vehicle



DISPATCH CREWS BY PUSHING ADDRESSES

onBoard Nav enables dispatchers to enter address details or click on a map location in the onBoard Mobility Manager to dispatch crews. The address information is routed through the oMG to the Garmin PND, and crews can be requested to acknowledge receipt, indicating they are en route or at the destination. In the vehicle, drivers view maps with voice-guided turn-by-turn navigation.

GET CONFIRMATION FROM CREWS THAT DISPATCH IS RECEIVED AND VEHICLE IS EN ROUTE

All communications are sent via the oMM and are tracked and time-stamped in the oMM. This enables dispatchers to know that dispatches are received and acknowledged. It also helps with analysis of performance to have historical data such as the times that vehicles were dispatched and the length of time at a location.

KNOW DRIVER ID AND DRIVER STATUS AT ALL TIMES

Monitor who is driving each vehicle in real time, plus use the historical data to review past vehicle usage. Drivers can enter their status from a list of options on the touch screen PND so dispatchers can make more informed decisions about the allocation of upcoming jobs.

onBoard NAV SYSTEM REQUIREMENTS

- onBoard Mobile Gateway: 1-port oMG or 4-port oMG with software version 3.5 or higher
- onBoard Mobility Manager: Hosted or Appliance
- Additional Equipment - available from In Motion Technology: Garmin FMI compatible PNDs, Garmin FMI serial cable
- Equipment available from other vendors: Secure dash mount available from RAM mounting

onBoard Nav is an application available with In Motion Technology's onBoard Mobility Manager. The onBoard Mobility Manager continuously collects and analyzes information from onBoard Mobile Gateways deployed in vehicles, allowing an organization to manage its mobile network, fleet, on-board devices and operations to peak efficiency.

© 2011 In Motion Technology Inc. U.S. Patent #7,382,771. Specifications subject to change without notice. onBoard is a trademark of In Motion Technology Inc. All other names mentioned herein are trademarks or registered trademarks of their respective owners.