

## MOBILE NETWORK MANAGEMENT



### OVERVIEW

onBoard™ Mobility Manager (oMM) is a network management system that collects and analyzes data from In Motion's onBoard Mobile Gateways (oMGs). Available as a hosted service or separate appliance, the onBoard Mobility Manager lets you manage your entire mobile network just as you would your corporate network. The oMM receives data collected by the oMGs, such as connectivity, network, GPS, WAN, LAN, security and VPN data.

### DASHBOARD

The dashboard provides a configurable, color-coded view of fleet health. Operator can monitor a large number of oMGs and their associated operational parameters. Each parameter has a multi-level threshold, and turns yellow then red as each threshold is exceeded. Filters provide the ability to quickly focus on a subset of information. The fleet can be segmented into groups, and users assigned different levels of access. Like most views in the oMM, the dashboard enables the user to 'drill down' for greater detail by clicking on hyper-linked data points.

### MAP VIEWS

As every oMG is equipped with GPS, location data is used by the oMM to provide a "where" to the "what, when, who, how, and why". A dedicated tab provides a map view of selected oMGs, showing location along with a color-coded flag to indicate status. Microsoft® Maps (Bing) are standard and the user may also select Google™ or ESRI™ maps. Other views throughout the oMM, including within reports, provide a map view in addition to the list of results.

### CORE REPORTS

While the dashboard and map views provide an instant snapshot, reports are a powerful tool for analysis and troubleshooting. Reports may be run ad-hoc, scheduled ahead of time, saved to the server, and emailed to multiple recipients. Report data may be exported in Excel format for further manipulation or integration with other data. The following core reports are included with the oMM:

1. Coverage Maps: Provide a high-level view of wide-area network coverage for the fleet. Multiple oMGs over multiple days contribute data cumulatively which is presented in the form of a 'heat map' to highlight weaker connectivity areas.
2. Coverage Trails: Show the exact path the oMGs have taken using colored paths to represent dropped connections and icons for dropped GPS or stationary times.
3. Availability Trend: Provides a snapshot of the connectivity percentage of each selected oMG across the fleet.
4. Bandwidth Consumption: Graphical views of data received and transmitted for each oMG on each network with a list view highlighting heavy users.
5. Link Utilization: Colored bars represent different states of connectivity, illustrating recurring connectivity issues and provides time-based views of each oMG and link activity.
6. Event Viewer: A powerful tool for troubleshooting oMGs remotely by viewing raw vehicle event data.

### KEY FEATURES

Advanced network diagnostics

Real-time view of entire mobile network

Remote troubleshooting

Configurable thresholds

Multi-level user settings

Fleet segmentation

Color-coded dashboard

Live map views

Location-based reporting

# onBoard™ Mobility Manager

MOBILE NETWORK MANAGEMENT



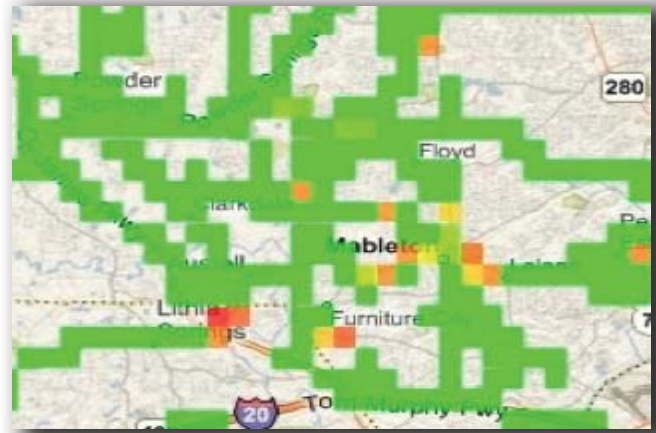
## STATISTICS

Access individual parameters for analysis and troubleshooting: oMG logs are automatically updated and stored on the server, ready for access at any time. Data may be sorted, filtered and displayed in a variety of ways to ensure your fleet's networking and communications platform achieves optimal performance.

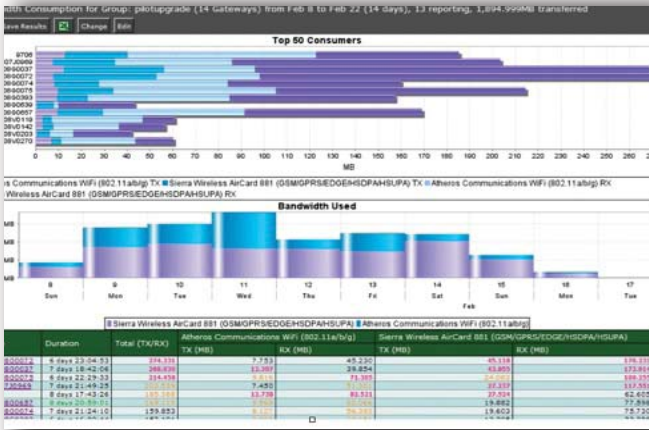
## Map View



## Coverage Map



## Bandwidth Consumption Report



## Link Utilization Report



MOBILE MANAGEMENT

© 2011 In Motion Technology Inc. U.S. Patent #7,382,771. Specifications subject to change without notice. onBoard is a trademark of In Motion Technology Inc. All other names mentioned herein are trademarks or registered trademarks of their respective owners.